



# DATA SHEET FOR FLP PUSH BUTTON STATION (LCS) WITH TERMINAL CHAMBER

## TECHNICAL DATA:

- PRODUCT : CAT NO.- PBS/2C/2015
- ENCLOSURE : FLAME PROOF (Ex -d ), Gas Group IIA , IIB, IIC  
As per IS/IEC 60079-1 : 2014
- PROTECTION : WEATHER PROOF IP – 66 AS PER IS/IEC 60529:2001  
(Reaffirmed 2014)
- AREA & TEMP. CLASS : Ex db IIC T6 Gb ( EX tb / tc IIIC T85 C Db/Dc  
(ZONE 1 & 2 & Zone 21 & 22 )
- CERTIFICATION : CIMFR, BIS, PESO
- TEMP CLASS : T6
- MATERIAL : DIE CAST ALUMINIUM ALLOY
- FINISH : EPOXY POWDER COATED SHADE AS PER IS : 5
- EARTHING : 1 No INTERNAL & 2 No's EXTERNAL
- HARDWARE : STAINLESS STEEL
- GASKET : 'O' RING ENDLESS GASKET NEOPRENE / SILICON
- NAME PLATE : SS NAME PLATE CUM WARNING PLATE
- ENTRIES : 2 Nos M25 / 1 " NPT / EQUIVALENT/UP TO M25

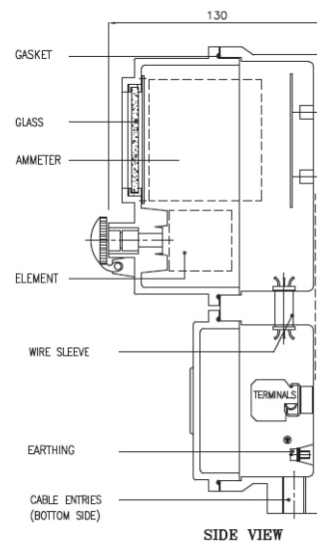
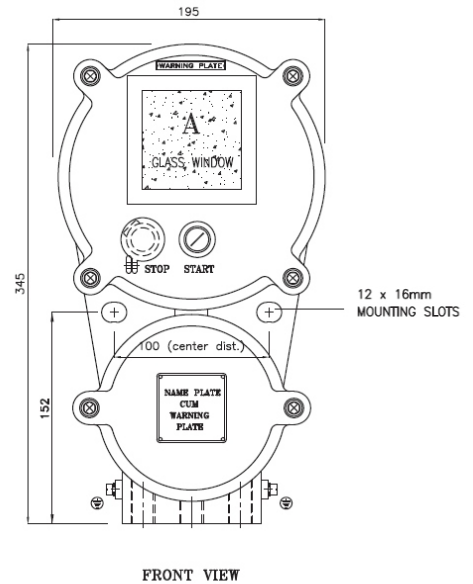


### OPTIONS

SR. NO	PARTICULAR	OPTIONS
1.	MATERIAL OF CONSTRUCTION	STAINLESS STEEL
2.	GLAND & PLUG	BRASS / SS / ALUMINIUM
3.	COLOUR SHADE	631, 632, 355, 7031, 7032 etc.
4.	ELEMENT	1 NO / 1 NC OR AS PER CUSTOMER REQUIREMENT
5.	CANOPY	M.S POWDER COATED / FRP / GI

### SELECTION CHART

SR.NO	COMBINATION
1.	ON/OFF PBS WITH AMMETER
2.	ON/OFF PBS WITH SELECTOR SWITCH
3.	ON/OFF PBS WITH AMMETER AND SELECTOR SWITCH
4.	2 PUSH BUTTON AND 2 INDICATION LAMP
5.	3 PUSH BUTTON AND 3 INDICATION LAMP



**NOTE:- PERMUTATION & COMBINATION OF COMPONENTS / ENTRIES AS PER CUSTOMER REQUIREMENT**